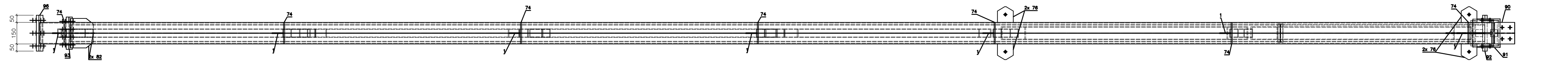
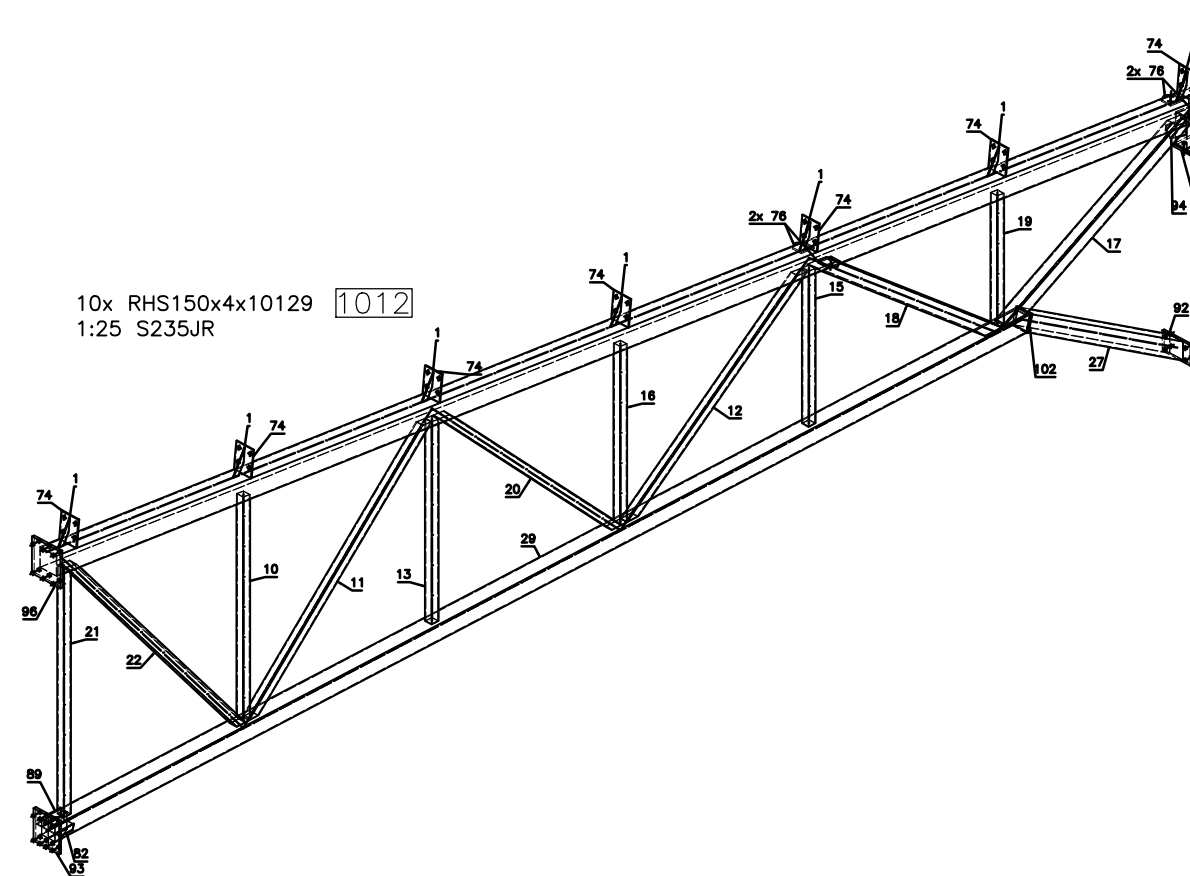
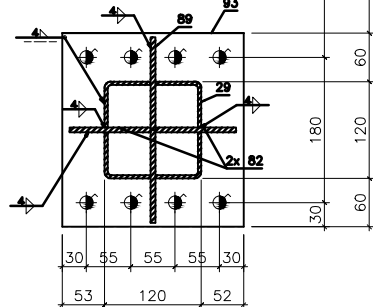


1012



Technical drawing of a square plate. The overall dimensions are 180 mm by 90 mm. The plate has four holes, each with a diameter of 27 mm. The distance between the centers of the holes is 120 mm horizontally and 60 mm vertically. The distance from the center of each hole to the nearest edge is 35 mm. The plate has a thickness of 4 mm. The drawing includes dimension lines and labels for the plate number (92) and the hole diameter (27).



1012

Pozycja	Nazwa	Ilość (szt.)	Długość (mm)	Szerokość (mm)	Materiał	Waga (kg)	Powłoka
103	RhS150x4	10					
212	RhS150x4	1	10129.1	0	S235JR	182.32	5.94
1	PL40X6	7	197	0	S235JR	0.37	0.02
74	BL8x200x150	7	200	150	S235JR	1.88	0.07
28	HEA180	1	388	0	S235JR	13.78	0.4
91	BL16x200x190	1	200	190	S235JR	4.77	0.09
83	BL8x50x50	2	50	50	S235JR	0.16	0.01
84	BL8x150x90	2	150	90	S235JR	0.84	0.03
94	BLx172x142	1	172.3	142.1	S235JR	1.15	0.04
82	BL8x160x100	2	160	100	S235JR	0.71	0.03
22	RhS60x4	1	2391.2	0	S235JR	16.05	0.54
11	RhS60x4	1	2174.9	0	S235JR	14.59	0.49
20	RhS60x4	1	2164.7	0	S235JR	14.53	0.49
12	RhS60x4	1	1938.7	0	S235JR	13.01	0.44
18	RhS90x4	1	1965.4	0	S235JR	20.64	0.68
17	RhS90x4	1	1804	0	S235JR	18.94	0.62
21	RhS60x4	1	1820.1	0	S235JR	12.21	0.41
10	RhS60x4	1	1856.1	0	S235JR	11.11	0.37
13	RhS60x4	1	1483.7	0	S235JR	9.66	0.34
16	RhS60x4	1	1311.4	0	S235JR	8.6	0.3
15	RhS60x4	1	1139	0	S235JR	7.64	0.26
19	RhS60x4	1	966.6	0	S235JR	6.49	0.22
89	BL8x230x162	1	230	161.5	S235JR	1.62	0.07
93	BL18x240x225	1	240	225	S235JR	7.63	0.12
96	BL18x270x250	1	270	250	S235JR	9.54	0.15
29	RhS120x4	1	8482.3	0	S235JR	120.45	3.95
92	BL16x250x150	1	250	150	S235JR	4.71	0.09
27	RhS120x4	1	1602.9	0	S235JR	22.76	0.75
102	BL116x130x130	1	130	130	S235JR	2.12	0.04
90	BL6x150x140	1	150	140	S235JR	0.98	0.05
14	PL40X6	1	154.6	0	S235JR	0.29	0.01
76	BL10x110x110	4	110	110	S235JR	0.83	0.03
Razem:		49				530.88	17.04